

**Chapter 03974 1918**

**GEORGE PERCY PIERCE 1897-1986 (89)**

**and**

**Norma Alice Smith 1898-1978 (80)**

Lincoln Park, Michigan

**George Pearce branch #5, generation #5.**

George P. is a grandson of Henry Pearce

George P. is the same generation as  
cousin Charles Small Pierce.



Wisconsin 128th  
Infantry

1/13/2025

## 5th generation


### Relationship: Henry PEARCE to George Percy PIERCE

George Percy PIERCE is the 2nd great grandson of Henry PEARCE


Self

 <b>Henry PEARCE</b> b: 7/25/1725 England d: 7/8/1788 Fairfield, NJ	 <b>Elizabeth Lucinda SPEAR</b> b: 5/6/1737 England d: 10/16/1814 Fairfield, NJ
--	--


Son

 <b>George PEARCE</b> b: 1/5/1779 Fairfield, NJ d: 11/15/1853
---


Grandson

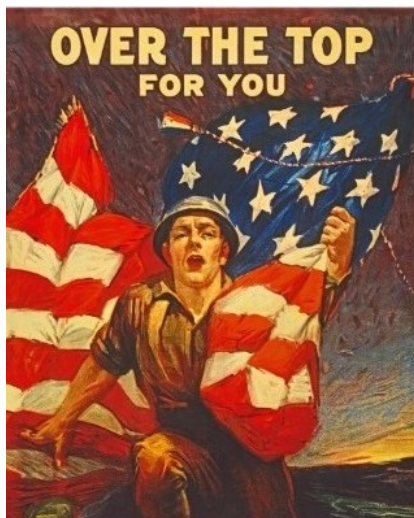
 <b>William M. PEARCE</b> b: 1810 Fairfield, NJ d: 5/17/1867
--

Great grandson

 <b>Charles Davis PEARCE</b> b: 5/24/1842 Fairfield, NJ d: 4/6/1920
---

2nd great grandson

 <b>George Percy PIERCE</b> b: 8/4/1897 Lincoln Park, MI d: 9/20/1986 Lincoln Park, Michigan
---



**George Percy Pierce** was a WW1 2nd Lieutenant.

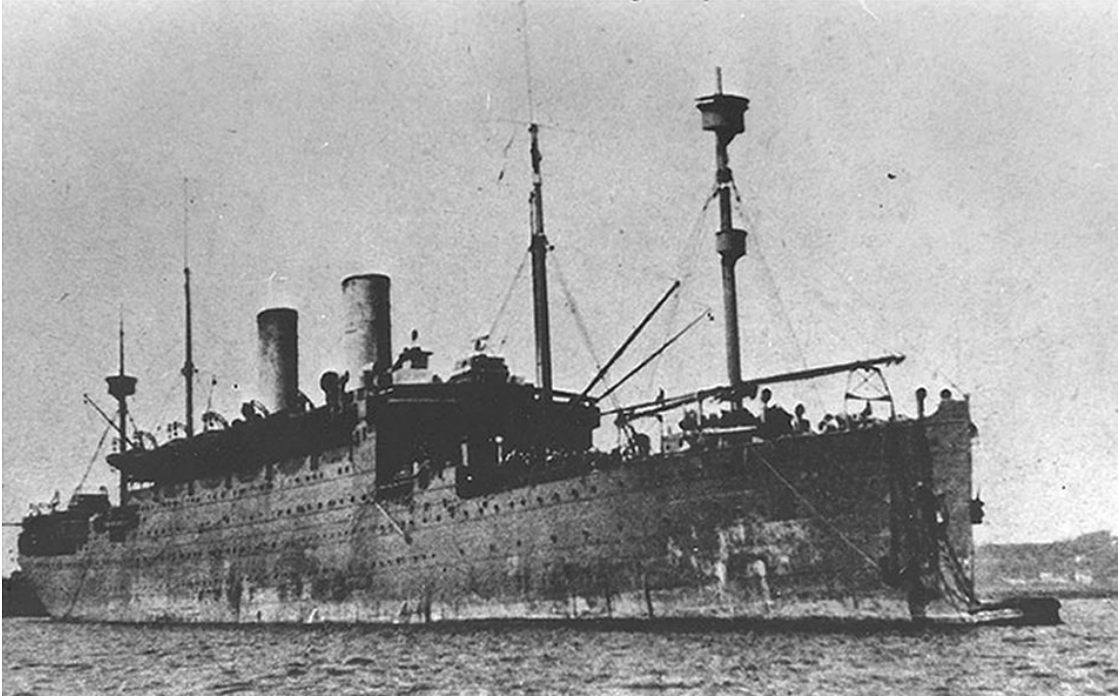
George started out as a Corporal in the Wisconsin 32nd Division, 128th Infantry, Company A. He trained at Camp Dix NJ. He earned his **2nd Lieutenant bars**.

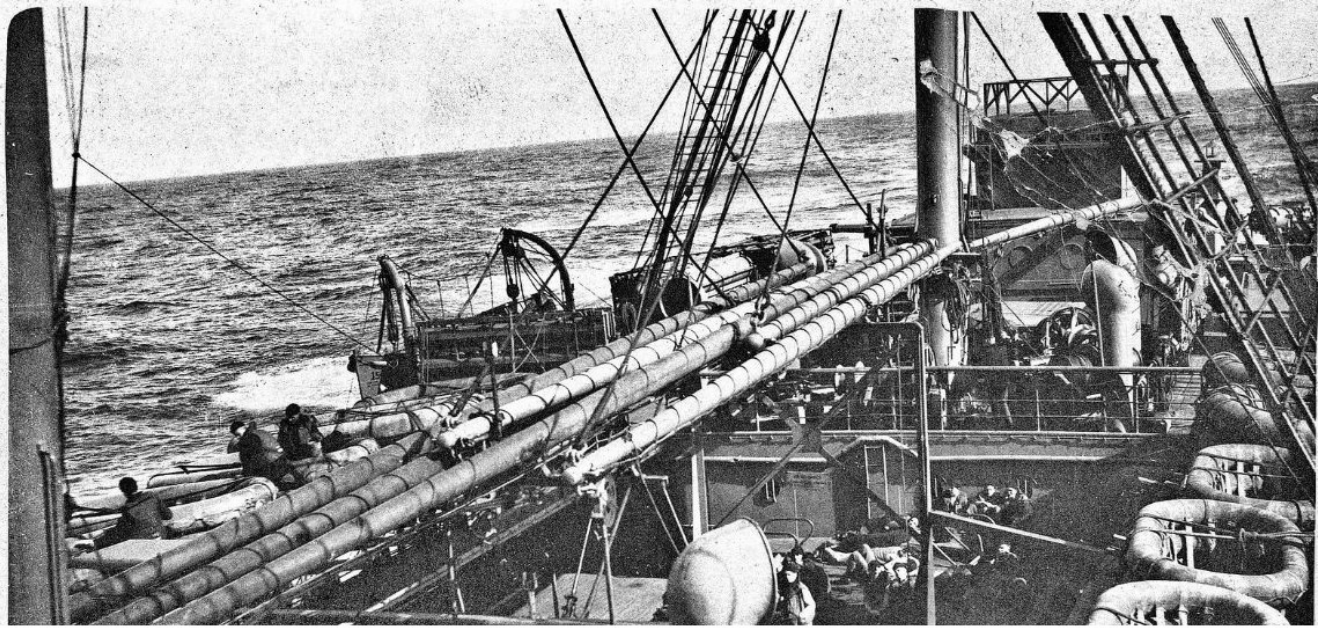
He departed Hoboken NJ aboard the USS Covington on 2/18/1918 bound for Brest France.



**Wisc 128th Infantry**

Photo # NH 85173 USS Covington in port, 1918

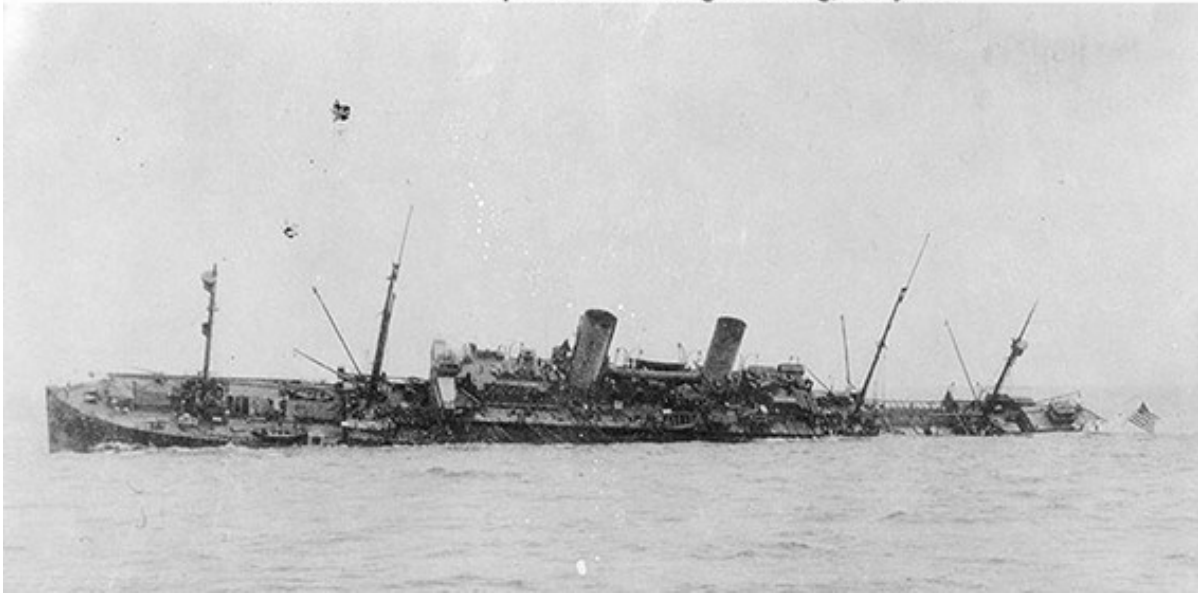




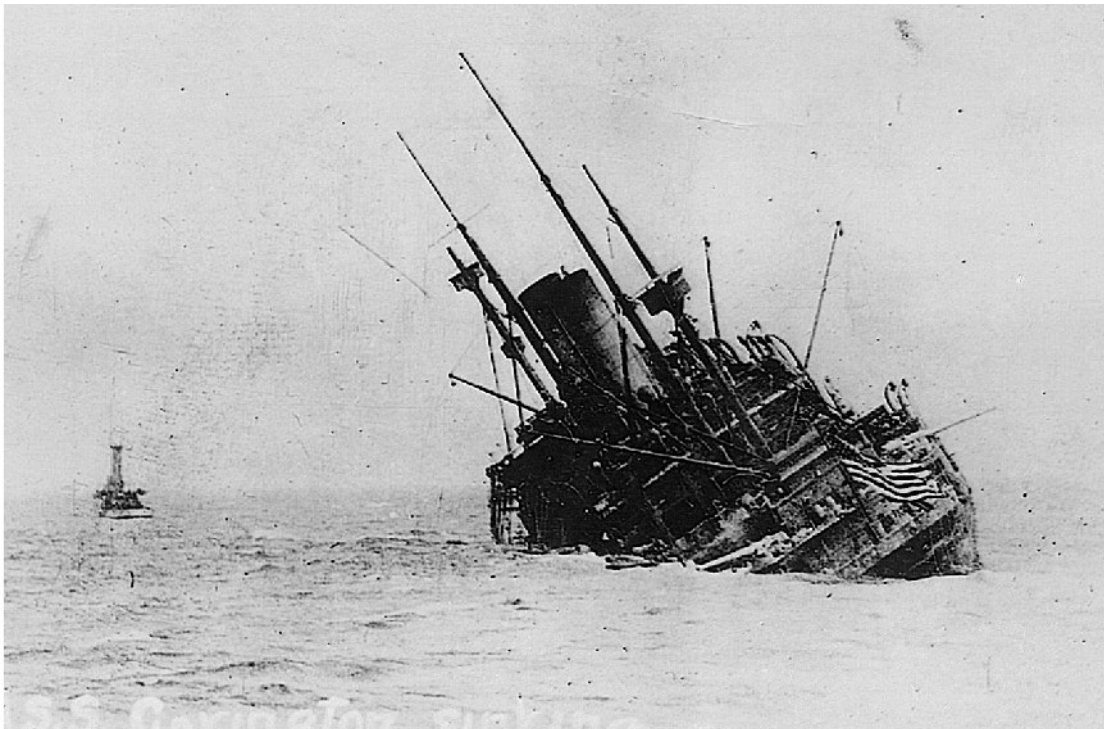
**USS Covington**



Photo # NH 55509 Torpedoed USS Covington sinking, 2 July 1918

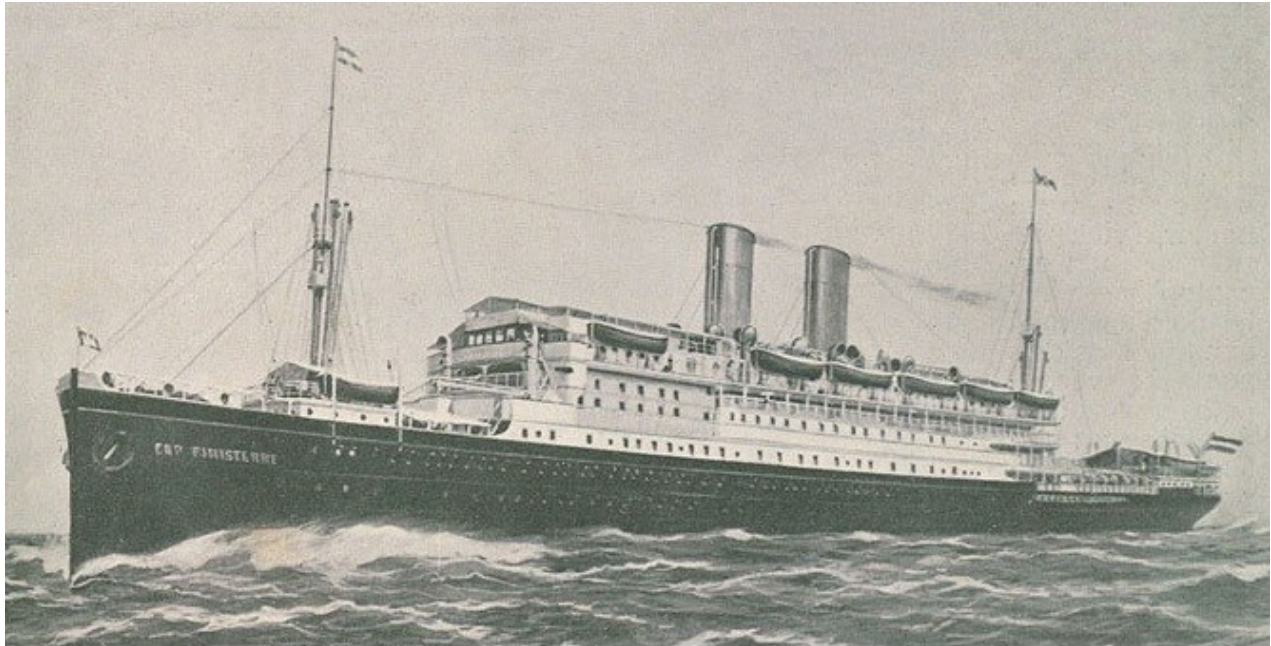


Sinking off Brest, France, on 2 July 1918. She had been torpedoed the previous day by German submarine *U-86*. A tug is visible ahead of *Covington*, which may have been under tow at the time of this photograph. Note lifeboat some distance away from the ship's port side.



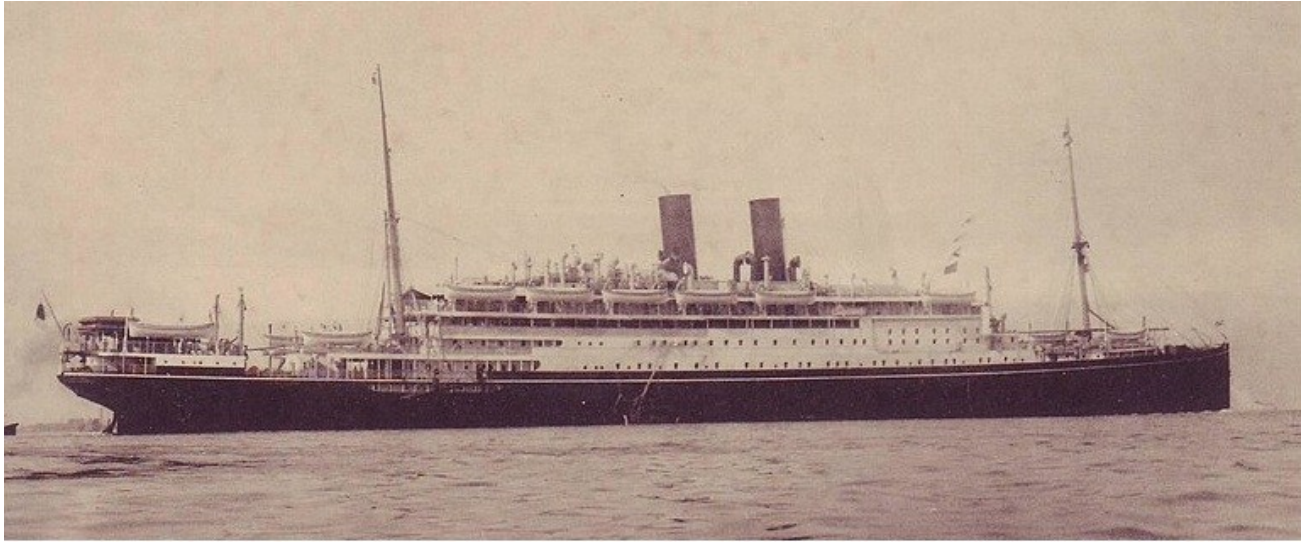
USS Covington

From 18 October 1917, *Covington* made six voyages from [Hoboken, New Jersey](#), to [Brest, France](#), taking more than 21,000 troops for service with the [American Expeditionary Force](#). On 1 July 1918 U-86 torpedoed her off Brest. Six of her crew were killed, but her [escorts](#) rescued 770. *Covington* remained afloat, and was towed about 50 miles toward Brest, but sank the afternoon of 2 July 1918.



**S.S. Cap Finisterre**





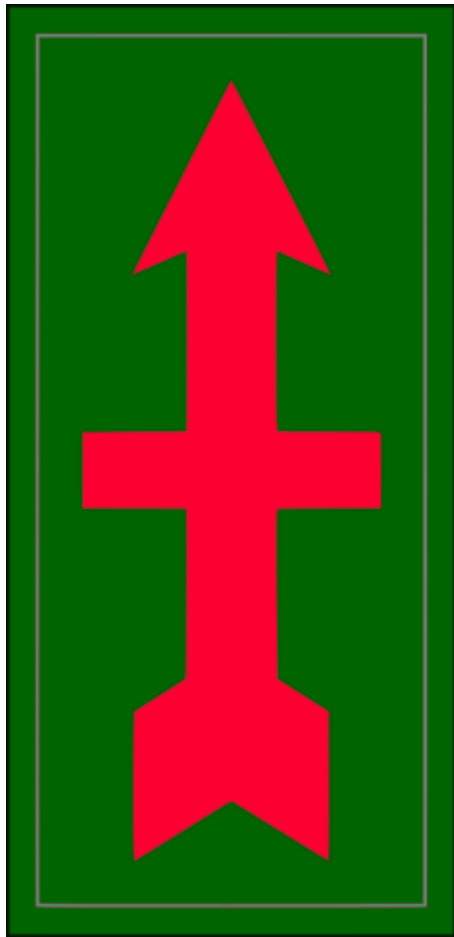
**S.S. Cap Finisterre**

The steam ship **Cap Finisterre** was a German transatlantic [ocean liner](#) of the early 20th century, which was transferred to Japan in 1920 as German war reparations, and re-named **Taiyō Maru** (大洋丸) on trans-Pacific routes. She was sunk on army service by an American submarine in 1942, during [World War II](#), with the loss of over 800 lives, mostly civilians.



Photo # NH 84664 USS Cap Finisterre bringing U.S. troops home from Europe, 1919





## The RED ARROW

32nd Infantry  
Division shoulder  
sleeve insignia



WW1 buddies “**Happy**” **Pierce** left and fellow soldier Bannon in white shirt.







**WW1 128th Infantry Company I. George Percy Pierce was in company A.**

**GEORGE P. PIERCE 1887-1986 (89)**

Branch #5

Wisconsin son of Charles Davis PEARCE and Alice F. "Stella" STALKER



World War One



Lived at Lincoln Park, Michigan. Was a 2nd Lt in WW1.



During the war, George was promoted to 2nd Lieutenant.

He left Brest France out on 7/19/1919 on the SS Cap Finisterre.

Here is the July 1919 ship manifest that showed soldiers aboard the SS Finisterne leaving Brest France for Hoboken NJ.

Upon arrival, 2nd Lieutenant George Percy Pierce was sent to Camp Dix, Pemberton, Burlington County, NJ.

To be filled in by company or detachment commander		Give full name of organization including company and regimental designation		FINISTERRE - - - B-6.		To be filled in by Debarkation Personnel Adjutant, U. S. A.	
To be filled in by Embarkation Personnel Adjutant, A. E. F.		Name of vessel		Port of sailing		Date of sailing	
		S.S. FINISTERRE		BREST (FINISTERRE)		JUL 3 1919	
No.	NAME AND SERIAL NUMBER Example: HENDERSON, HARRIS E. 1. 1. 1. 1.		Rank & Arm or Staff Corps. Example: C. A. G.	Organization (regiment & company or detachment)	NOTIFY IN CASE OF EMERGENCY. (Give name in full, for example: Mrs. Mary A. Smith.)		Relationship Example: Foster-mother
						ADDRESS (Number, Street, City and State) Do not abbreviate.	
Leave double space between entries. All typewriting must be in CAPITAL LETTERS.							

67.	PIERCE, GEORGE PERCY	2ND I. - A.	MRS. BEATRICE	SISTER	ADAMS, WISCONSIN.
		LT. R. & P.	HOWARD		
		INF. COMP.			

69	AUTHORITY: EMBARKATION ORDER NO. 331, JULY 2, 1919.				
----	---	--	--	--	--

Charles Davis & Alice F. "Stella"

George Percy PIERCE

Born:

8/4/1897

Lincoln Park, MI

Died:

9/20/1986

Lincoln Park, Michigan

2

Norma Alice Smith

Born:

4/16/1898

Reedsburg, WI

Died:

7/5/1978

Lincoln Park, MI

Marriage: 1920

Go	Children: 4	Sex	Birth	Death
◀	George Clell PIERCE	M	10/5/1920 in Wyandotte, Michigan	2/25/1977 in Ypsilanti, MI
<	Harold Alden PIERCE	M	4/4/1925 in Lincoln Park, Michigan	10/28/2001 in Marinette, Michigan
<	Gloria Alice PIERCE	F	1926 in Wyandotte, Michigan	
<	Donna Fae PIERCE	F	8/8/1927 in Michigan	12/24/1995

George Percy Pierce married a second time to a Bridget in 1970s. Probably after his wife Norma died in 1978.

Their sons George C. and Harold served in WW2.

Harold was a Private First Class in the Marines. Harold enlisted



This might be our  
Harold Pierce.

Elmhurst College, IL  
Yearbook



**George Percy PIERCE 1897 - 1986  
and wife**

**Norma Alice Smith 1898 - 1978**

**Lived in Lincoln Park, Michigan**



**George Percy Pierce and wife Norma Pierce.**





**George P. Pierce 1986 Burial:  
Parkview Memorial Cemetery, Livonia, Wayne County, Michigan**



**Son of Charles Davis PEARCE and Alice F. "Stella" STALKER. Born in Wisconsin.**





**1978 Grandfather George Percy Pierce and Kathy Pierce in Michigan.**



1948 Harold worked as a Signal Helper on the Elmhurst Illinois railroad.